



**Street Commercial Real Estate**

522 Lander St #200 Reno, NV 89509  
(775) 852-5225  
www.street-cre.com

FOR LEASE

# 7930 SUGAR PINE CT

RENO, 89523



**Matthew Harris**

Principal - Broker  
Matt.Harris@street-cre.com  
NV RE #B.1002868  
O: (775) 852-5225 Ext 1002  
C: (775) 250-4684



**Ben Harris**

Principal  
Ben.Harris@street-cre.com  
NV RE #S.0187049  
O: (775) 852-5225 Ext 1001  
C: (775) 221-6846



**Christian Stolo**

Associate - Industrial  
Christian.Stolo@street-cre.com  
NV RE #S.0196067  
O: (775) 852-5225 Ext 1003  
C: (775) 842-7450



# PROPERTY DETAILS

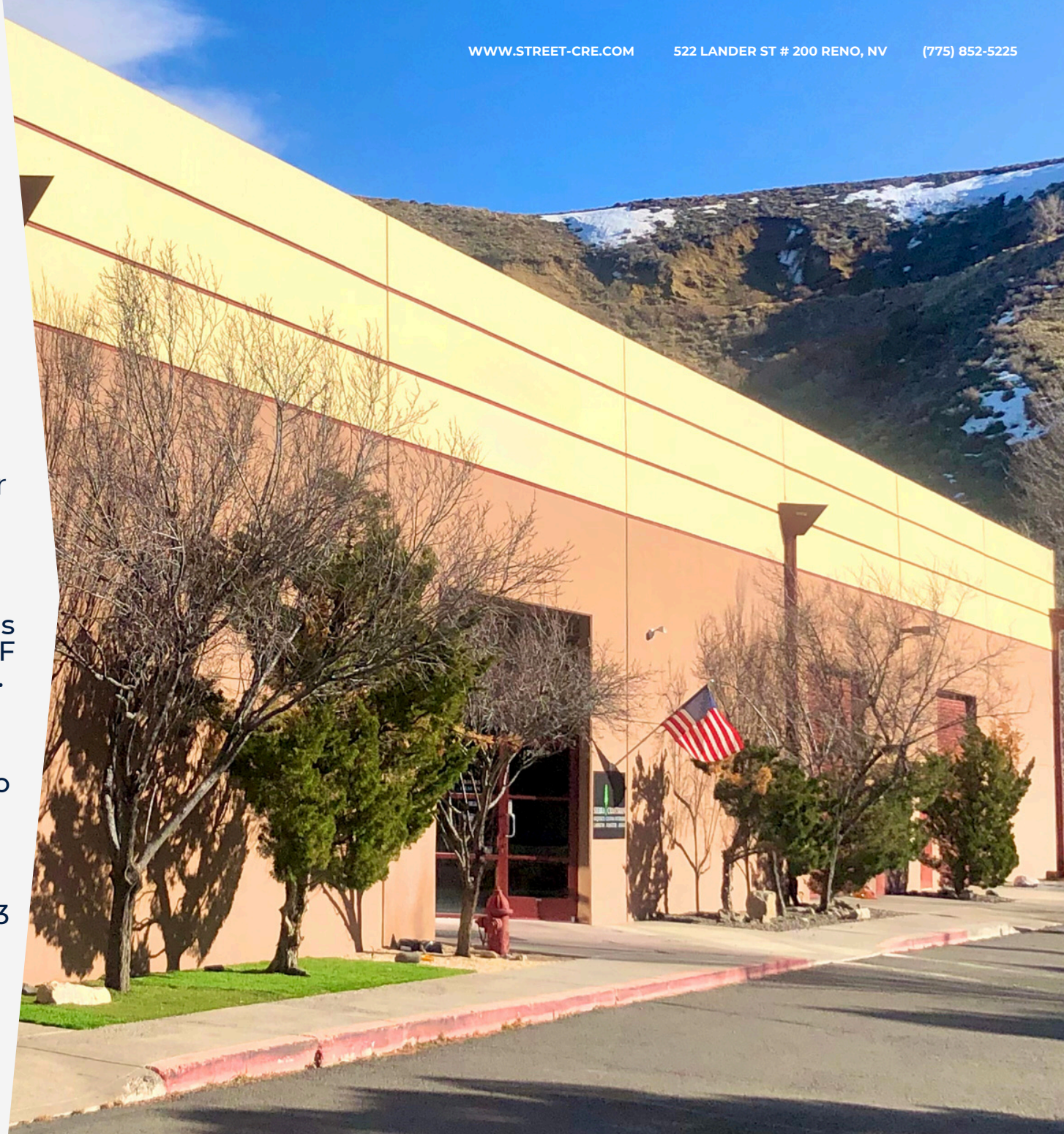
## 7930 SUGAR PINE CT

- APN 212-050-09 23
- 23,244 Total SF
- 5 Grade Level Doors
- 1400+ Amps 3 Phase Power
- Option for Fenced Yard

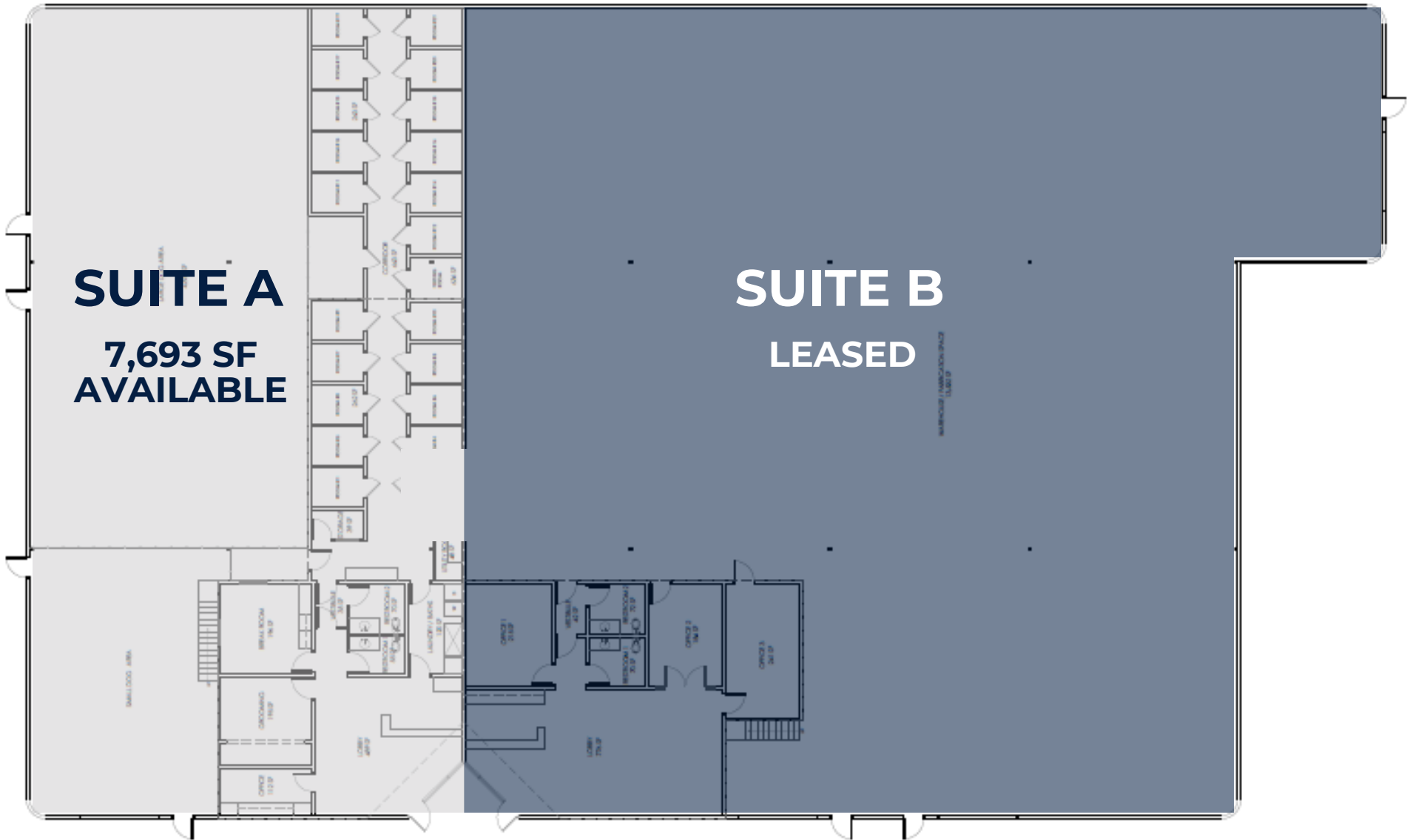
Street Commercial Real Estate is pleased to present this 23,224 SF flex industrial building for lease.

This multi-tenant building is located in the desirable West Reno sub-market and is 1.5 Mi to I-80, making it conveniently close to the main vessel into Northern California and Downtown Reno. This property is currently comprised of a 7,693 SF unit and a 15,551 SF unit but can be combined for a single occupier.

Neighboring tenants include Patagonia, BeaverFit, and Nutrient Survival.



BUILDING  
**FLOORPLAN**  
7930 SUGAR PINE CT



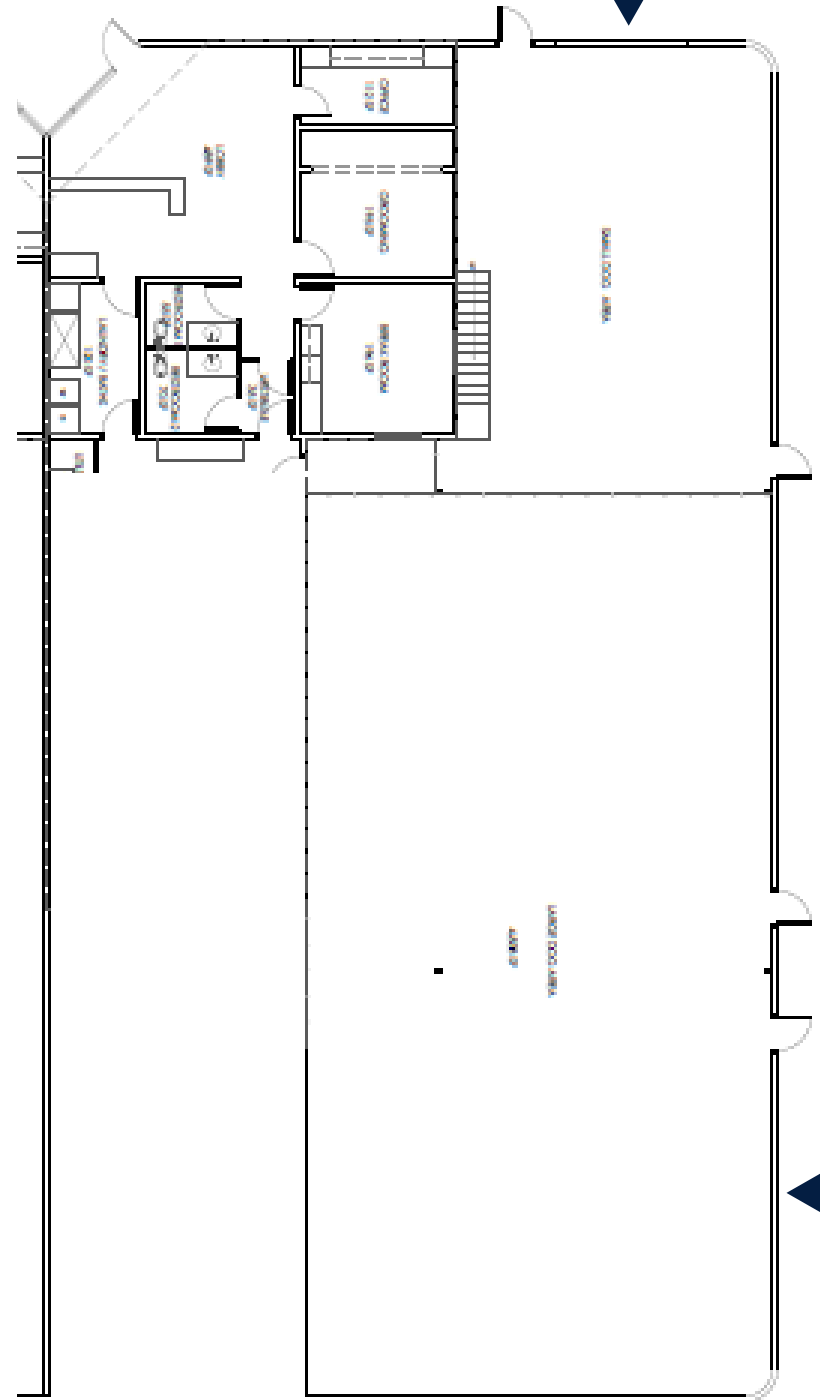
This information supplied herein is from sources we deem reliable. It is provided without any representation, warranty, or guarantee, expressed or implied as to its accuracy. Prospective Buyer or Tenant should conduct an independent investigation and verification of all matters deemed to be material, including, but not limited to, statements of income and expenses. Consult your attorney, or other professional advisor.

# STE A

## UNIT FEATURES

### 7930 SUGAR PINE CT

- 7,693 Total SF
  - 1,272 SF Office
  - 6,421 SF Warehouse
- 18' Clear Height
- 400 AMP (TBV)
- (2) Drive in Doors





# LOCATION **HIGHLIGHTS** 7930 SUGAR PINE CT

- West Reno Industrial Submarket
- Quick Access to I-80
- Along West Bank of Truckee River
- MUW4 Zoning allows for wide range of uses





# CONTACT US

*For any questions regarding the industrial market here in the Reno area, or inquiries on a specific property, contact us today!*

**522 Lander St #200  
Reno, NV 89509**

**(775) 852-5225**

**admin@street-cre.com**

**www.street-cre.com**

**STREET COMMERCIAL REAL ESTATE**



*Scan to visit our website! We offer the latest industrial market data, an in-depth look at our services, and more!*

## INDUSTRIAL SERVICES TEAM



**Matthew Harris**

Principal - Broker  
Matt.Harris@street-cre.com  
NV RE #B.1002868  
O: (775) 852-5225 Ext 1002  
C: (775) 250-4684



**Ben Harris**

Principal  
Ben.Harris@street-cre.com  
NV RE #S.0187049  
O: (775) 852-5225 Ext 1001  
C: (775) 221-6846



**Christian Stolo**

Associate - Industrial  
Christian.Stolo@street-cre.com  
NV RE #S.0196067  
O: (775) 852-5225 Ext 1003  
C: (775) 842-7450